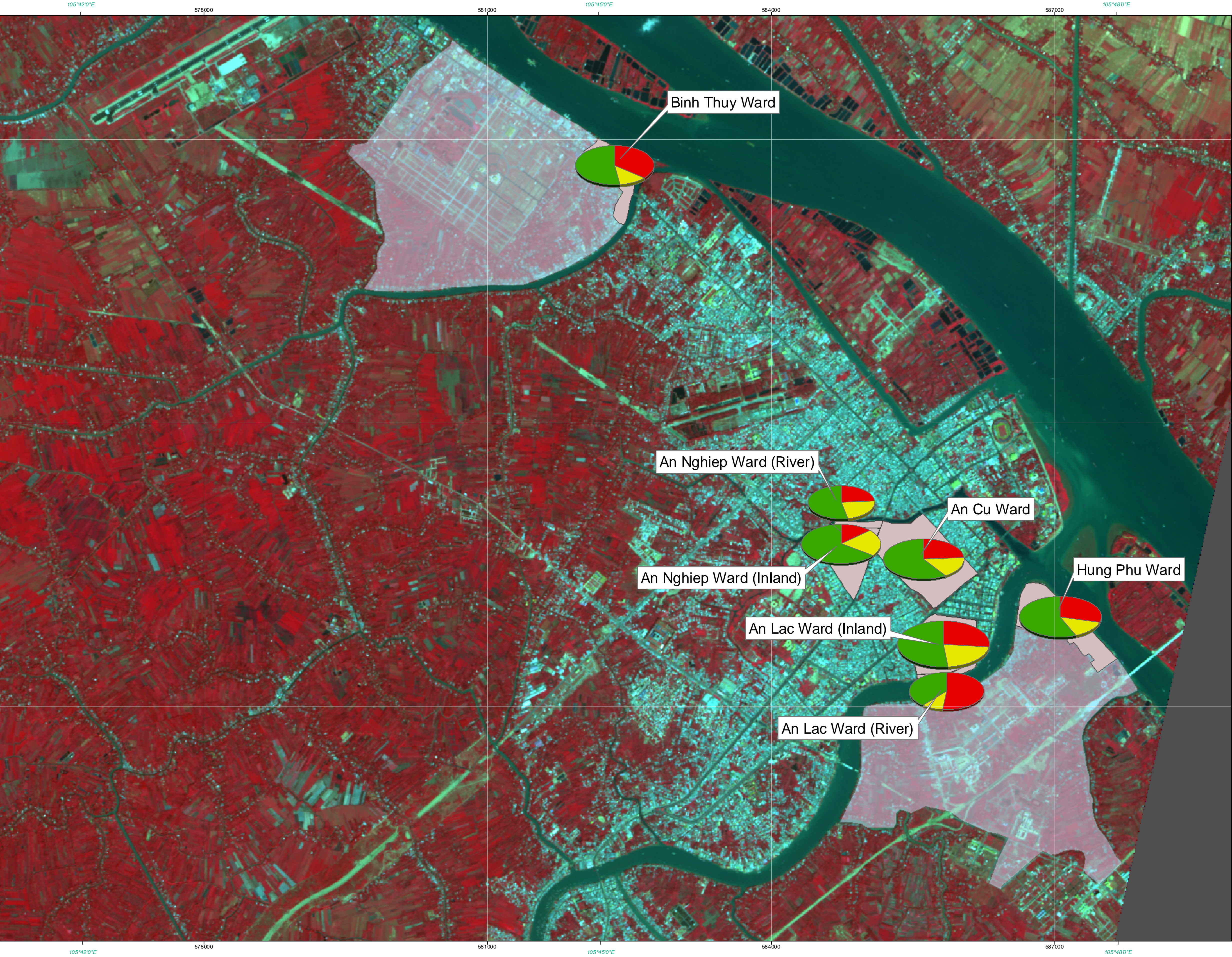


Households Affected by Regular Tidal Flooding During Rainy Season

1:20.000



Legend

Households affected by tidal flooding

- Size indicates total number
- Completely
- Partially
- No
- Wards of Case Study Areas
- Case Study Areas

Scale / Reference System

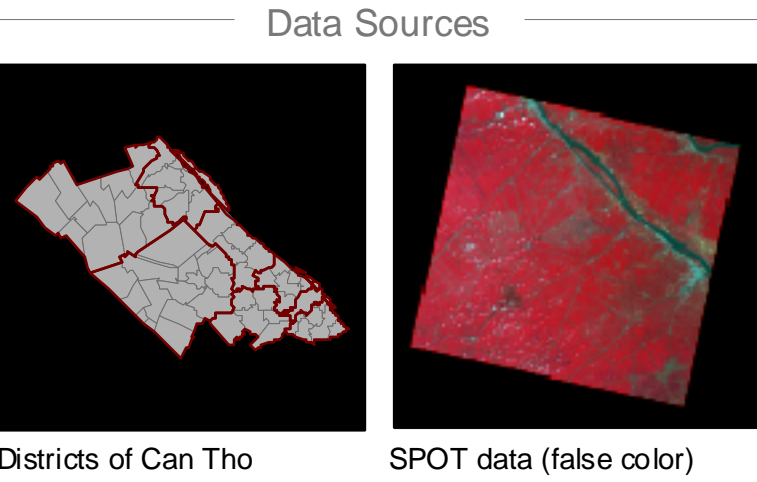
0 300 600 900 1,200 m

Reference coordinate system: Geographic coord. system:
Projection: UTM Zone 48 N Geographic (DMS)
Spheroid: WGS 84 WGS 84
Datum: WGS 84 WGS 84

Interpretation

The map shows how many of the interviewed households are affected by tidal flooding during the rainy season. The red segments indicate the percentage of those households which stated that the entire house is regularly affected. Yellow indicates the flooding of parts of the house. Green indicates no flooding.

It becomes clear that depending on the area between one and two thirds of all households are in some way affected by tidal flooding during the rainy season. In addition, one can see that proximity to the river is an important exposure indicator even though also the areas inland are affected to great extent.



District boundaries:
© Department of Urban Planning and Architecture, Can Tho City, 2009
SPOT-5 HRG data from 2009/02/06
© SPOT Image, 2008

Map Info

Cartography
© M. Garschagen (UNU-EHS/WISDOM)
January 2010

