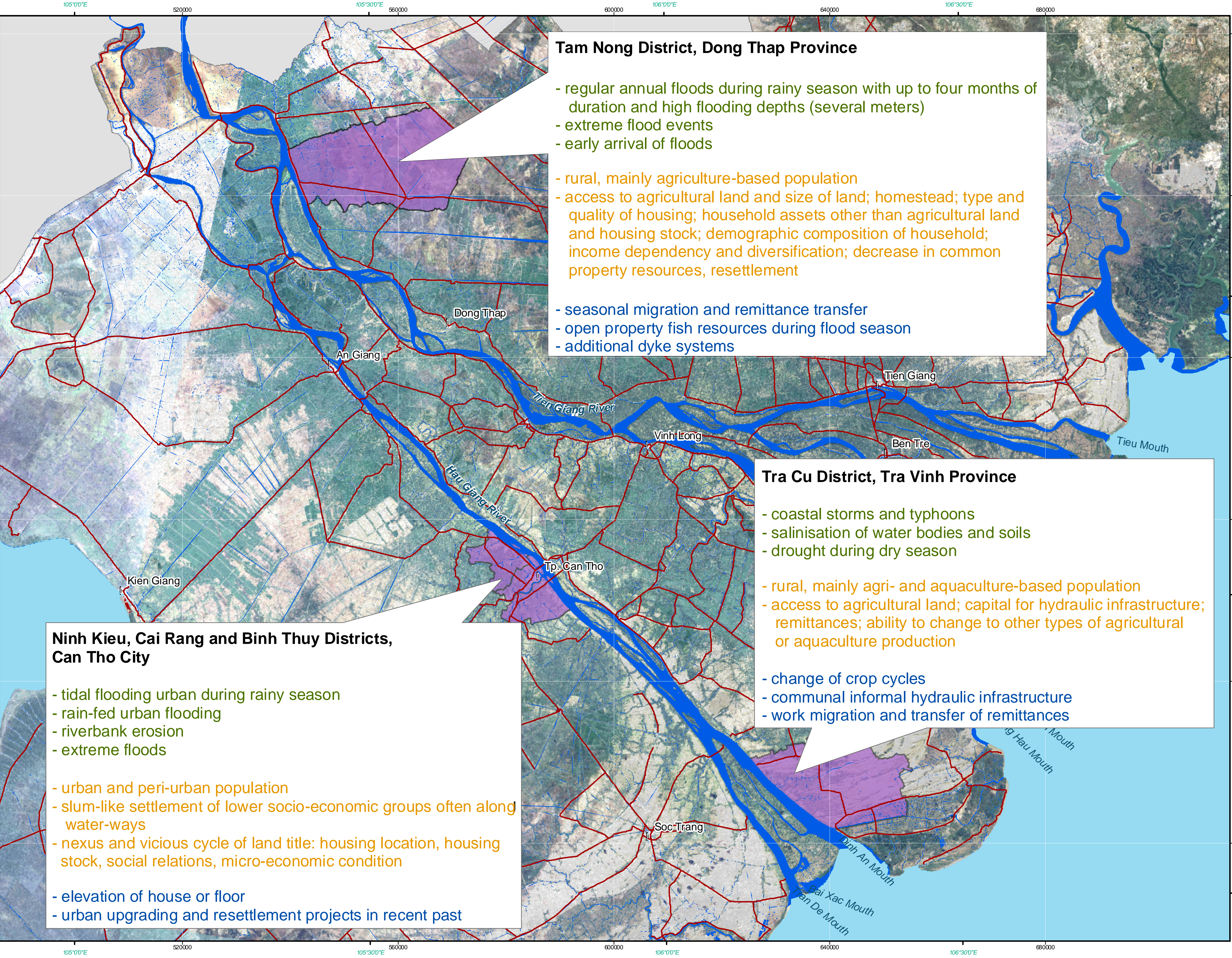


Vietnam - Mekong Delta - Case Study Areas and Main Findings Vulnerability Assessment WISDOM

1:350.000



Tam Nong District, Dong Thap Province

- regular annual floods during rainy season with up to four months of duration and high flooding depths (several meters)
- extreme flood events
- early arrival of floods
- rural, mainly agriculture-based population
- access to agricultural land and size of land; homestead; type and quality of housing; household assets other than agricultural land and housing stock; demographic composition of household; income dependency and diversification; decrease in common property resources, resettlement
- seasonal migration and remittance transfer
- open property fish resources during flood season
- additional dyke systems

Tra Cu District, Tra Vinh Province

- coastal storms and typhoons
- salinisation of water bodies and soils
- drought during dry season
- rural, mainly agri- and aquaculture-based population
- access to agricultural land; capital for hydraulic infrastructure; remittances; ability to change to other types of agricultural or aquaculture production
- change of crop cycles
- communal informal hydraulic infrastructure
- work migration and transfer of remittances

Ninh Kieu, Cai Rang and Binh Thuy Districts, Can Tho City

- tidal flooding urban during rainy season
- rain-fed urban flooding
- riverbank erosion
- extreme floods
- urban and peri-urban population
- slum-like settlement of lower socio-economic groups often along water-ways
- nexus and vicious cycle of land title: housing location, housing stock, social relations, micro-economic condition
- elevation of house or floor
- urban upgrading and resettlement projects in recent past



Legend

Satellite data

River/Settlement Agriculture Vegetation/Swamp

Basic information

Case Study Districts Cities and Towns
Cambodia Major Roads
Ocean River

Scale / Reference System

0 5 10 15 20 km

Reference coordinate system: *Geographic coord. info:*
Projection: UTM Zone 48 N *Geographic (DMS)*
Spheroid: WGS 84 *WGS 84*
Datum: WGS 84 *WGS 84*

Interpretation

The map shows the Mekong Delta and the case study districts of the vulnerability assessment within the WISDOM project. Divided into three parts each, the text boxes summarize the main (1) **hazards**, (2) **socio-economic conditions and vulnerabilities** and (3) **adaptation strategies** in each of the different archetype case study areas. The findings show that there are significant differences between the vulnerability profiles in those areas.

Data Sources

LANDSAT TM data © USGS 1990
Administrative boundaries © Sub National Institute for Agricultural Planning and Projection (Sub-NIAPP), 2000
City location data and road network © Southern Institute of Water Resources Research (SIWRR)
River Network © Mekong River Commission (MRC)

Map Info

Map creation by UNU-EHS:
- Image enhancement for LANDSAT
Map created October 2010 within the WISDOM project