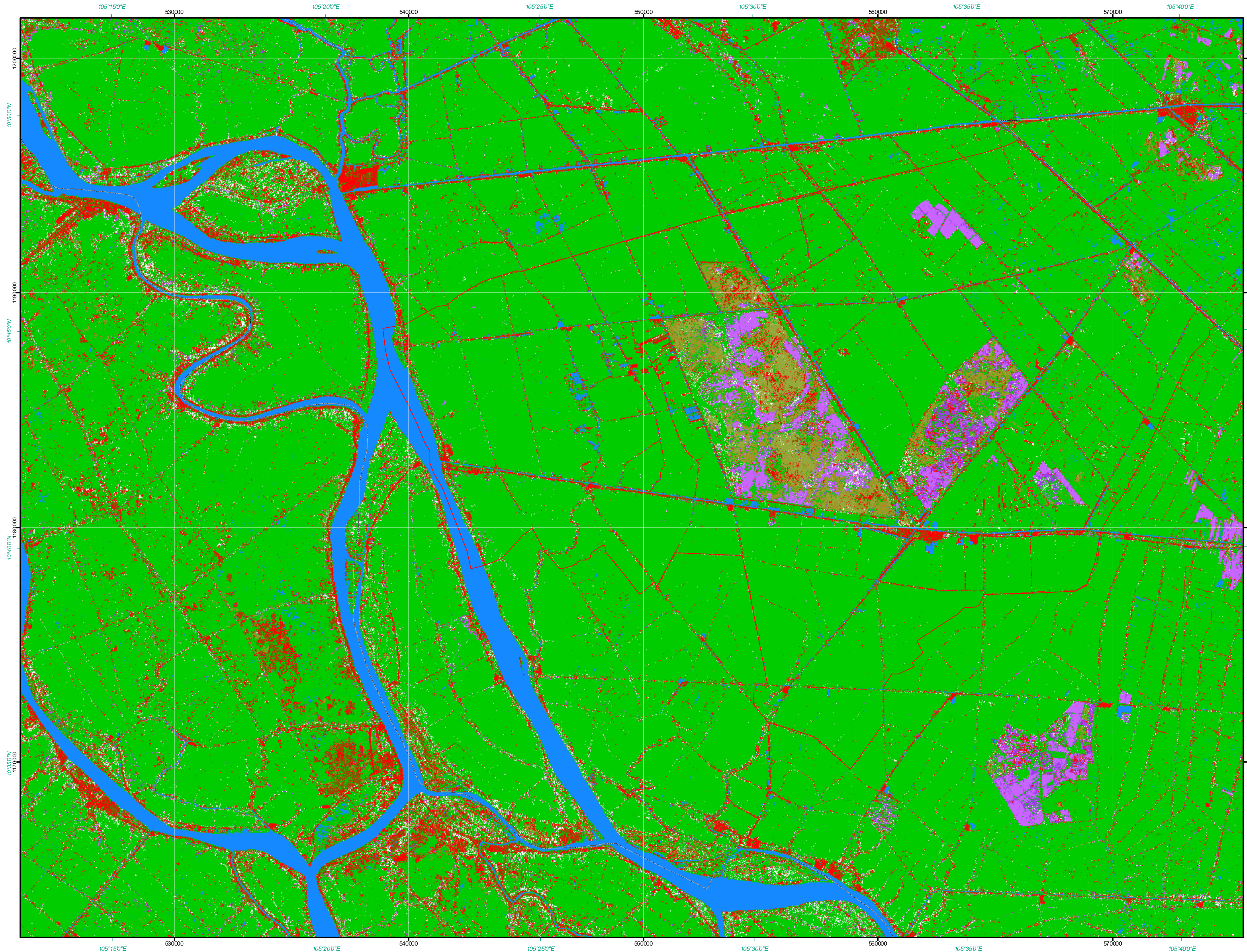


# Vietnam - Tam Nong District - Land Cover Classification 2009

1:80.000



### Legend

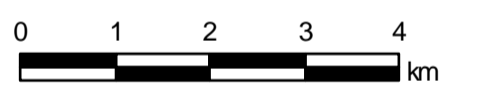
#### Land Cover Classification

- Water
- Natural Herbaceous Cover II
- Bare Area
- Natural Herbaceous Cover I
- Natural Tree Cover II (melaleuca forest)
- Artificial Surface
- Managed Herbaceous Cover (rice)
- Natural Tree Cover I

#### Basic Information

- District Boundary
- Testsite Boundary

#### Scale / Reference System



Scale: 1:80.000

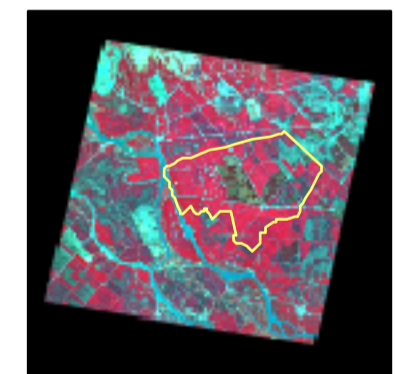
Reference coordinate system: *Geographic coord. system:*

Projection: UTM Zone 48 N *Geographic (DMS)*

Spheroid: WGS 84 *WGS 84*

Datum: WGS 84 *WGS 84*

#### Data Sources



SPOT-4 data from 2009/01/17 © SPOT Image, 2008

#### Map Info

Image processing and map creation by DLR

- Image enhancement for SPOT-4 data
- Land cover classification on the basis of SPOT-4 data

Map created April 2010 by WISDOM

German Remote Sensing Data Center  
German Aerospace Center



A GERMAN - VIETNAMESE INITIATIVE

WISDOM Project  
Coordinated by DLR  
www.wisdom.caf.dlr.de  
For questions contact:  
claudia.kuenzer@dlr.de  
phone: 0049-8153-28-3280